

**ÜBERSICHTSZEICHNUNG**  
**ASSEMBLY DRAWING**

**GHOST**



**E-SQUARE TREKKING ADVANCED (MY21)**

Datum: 17-05-2021

Version: 01



E-SQUARE TREKKING ADVANCED (MY21)

date: 17-05-2021

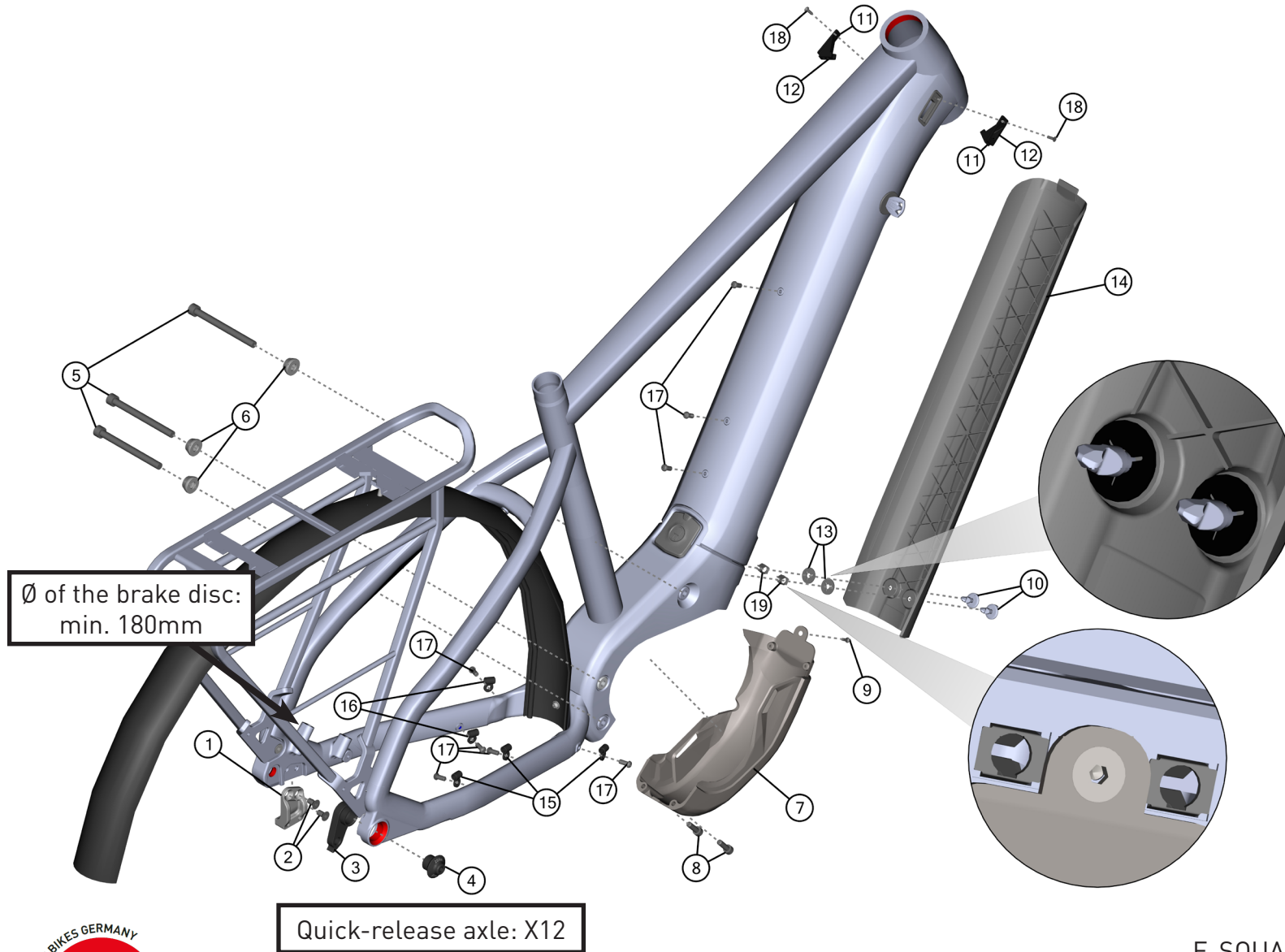
version: 01

page 1 / 8

# ÜBERSICHTSZEICHNUNG

ASSEMBLY DRAWING main frame

# GHOST



**Hinweis:** Bei den Schrauben muss mittelfeste Gewindesicherung verwendet werden. Rote Flächen müssen gefettet werden.

**Note:** use medium strength screw lock for screw threads. red surfaces has to be greased.



E-SQUARE TREKKING ADVANCED (MY21)

date: 17-05-2021

version: 01

page 2 / 8

# ÜBERSICHTSZEICHNUNG

## ASSEMBLY DRAWING main frame

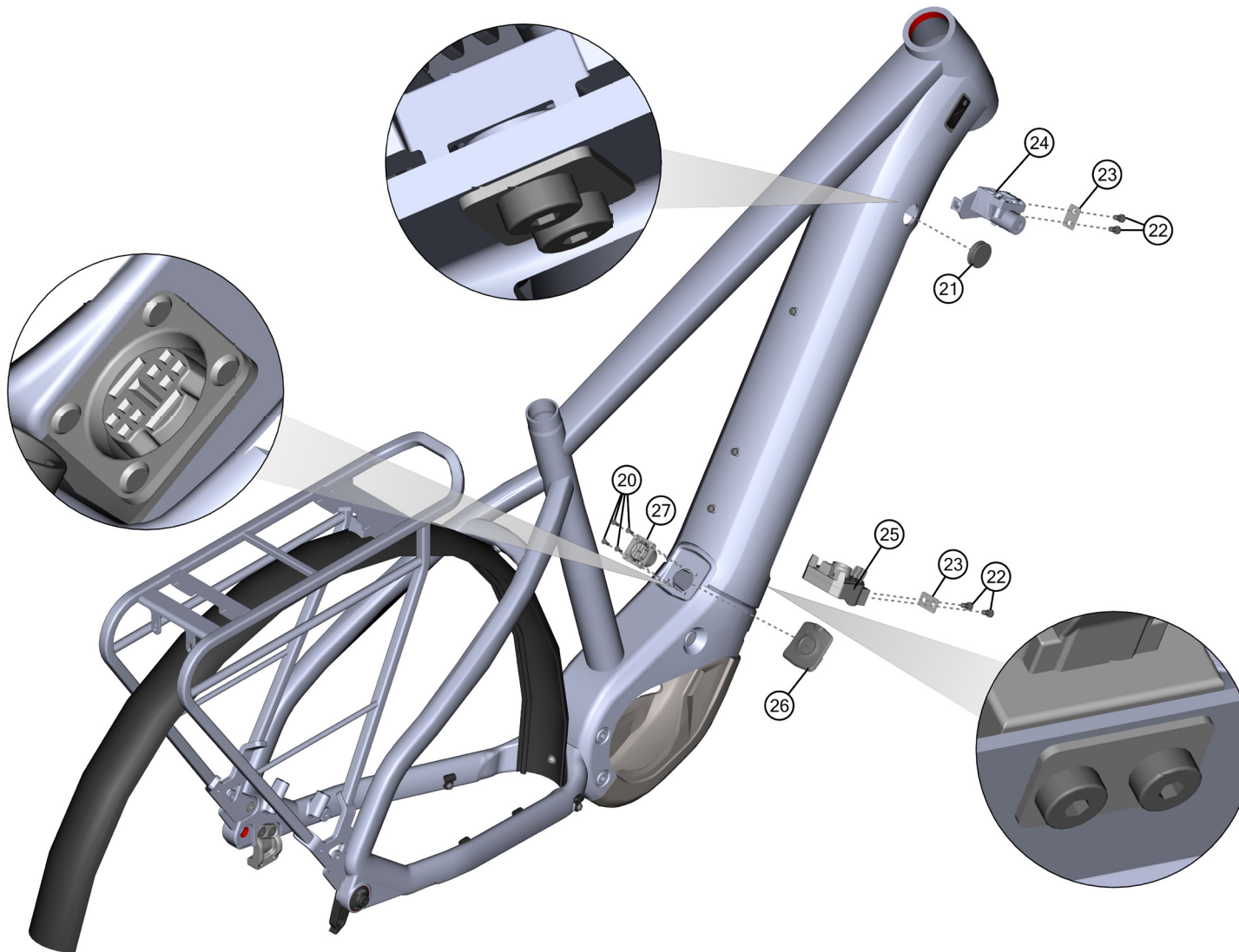
# GHOST

BOM-ID	Description	Specification	Torque	Item no.	QTY
1	Kickstand Adaptor			SMKS0001	1
2	Counter sunk screw	TX30 - M6 x 13 mm	11 Nm	SMSC0006	2
3	Hanger			FRHG0025	1
4	Hanger nut		20 Nm	FRNT0008	1
5	Hexagon socket screw	IS6 - M8 x 75 mm	28 Nm	FRSC0109	3
6	Cap for hexagon socket screw			FRSC0110	3
7	Motor cover			FRPR0071	1
8	Hexagon socket screw	IS4 - M5 x 20 mm	6 Nm	SM1229	2
9	Counter sunk screw	IS2,5 - M4 x 8 mm	3 Nm	FRSC0090	1
10	Locking pin with handle			FROT0048	2
11	Cable inlets right side			FROT0169	2
12	Cable inlets left side			FROT0170	2
13	Holderplate			FROT0216	2
14	Battery cover			FRPR0072	1
15	Cable guide for 1 cable			SM0002	3
16	Cable guide for 2 cable			SM0263	2
17	Lens head screw	TX25 - M5 x 12 mm	6 Nm	SM0919	8
18	Counter sunk screw	TX10 - M3 x 8 mm	1 Nm	FRSC0072	2
19	Clip			FROT0046	2

# ÜBERSICHTSZEICHNUNG

ASSEMBLY DRAWING battery recording

# GHOST



**Hinweis:** Bei den Schrauben muss mittelfeste Gewindesicherung verwendet werden. Rote Flächen müssen gefettet werden.

**Note:** use medium strength screw lock for screw threads. red surfaces has to be greased.

# ÜBERSICHTSZEICHNUNG

## ASSEMBLY DRAWING battery recording

**GHOST**

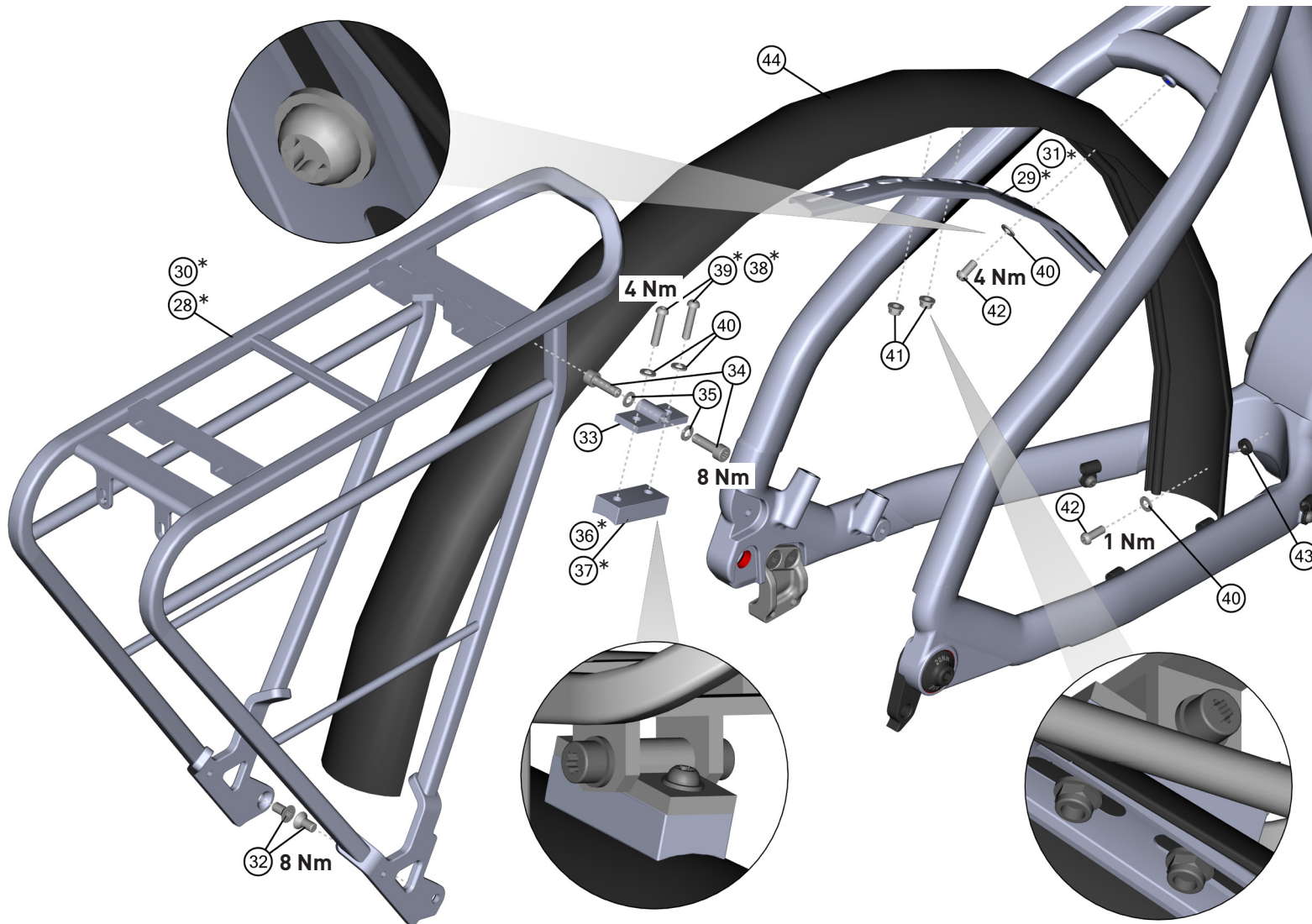
BOM-ID	Description	Specification	Torque	Item no.	QTY
20	Counter sunk screw	TX10 - M3 x 6 mm	1 Nm	FRSC0114	4
21	Rubber ring			FROT0215	1
22	Hexagon socket screw (flat head)	IS3 - M5 x 16 mm	6 Nm	FRSC0115	4
23	Washer Battery Mount			FRWS0009	2
24	Battery lock			LO0003	1
25	Battery Connector			ELOT0009	1
26	Charge socket port plug			FROT0208	1
27	Charge socket			EL0294	1



# ÜBERSICHTSZEICHNUNG

ASSEMBLY DRAWING carrier and fender

# GHOST



**Hinweis:** Bei den Schrauben muss mittelfeste Gewindegewissicherung verwendet werden. Rote Flächen müssen gefettet werden.

**Note:** use medium strength screw lock for screw threads. red surfaces has to be greased.

# ÜBERSICHTSZEICHNUNG

## ASSEMBLY DRAWING carrier and fender

# GHOST

BOM-ID	Description	Specification	Torque	Item no.	QTY
28*	Carrier <b>(depending which is installed)</b>			CA0017	1
29*	Carrier rail <b>(depending which is installed)</b>			SMF0025	1
30*	Carrier <b>(depending which is installed)</b>			CA0020	1
31*	Carrier rail <b>(depending which is installed)</b>			CA0021	1
32	Counter sunk screw	TX30 - M6 x 14 mm (8.8)	8 Nm	FRSC0135	2
33	Plate for carrier			SMF0024	1
34	Hexagon socket screw (flat head)	IS4 - M6 x 14 mm (8.8)	8 Nm	SM1693	2
35	Washer	ø 6,4 mm		SM1243	2
36*	Carrier spacer 5mm <b>(depending which is installed)</b>			FROT0228	1
37*	Carrier spacer 10mm <b>(depending which is installed)</b>			FROT0211	1
38*	Lens head screw for 5mm carrier spacer <b>(depending which is installed)</b>	IS3 - M5 x 20 mm (10.9)	4 Nm	SM1192	2
39*	Lens head screw for 10mm carrier spacer <b>(depending which is installed)</b>	IS3 - M5 x 25 mm (10.9)	4 Nm	SM1193	2
40	Washer	ø 5,3 mm		SM1242	4
41	Self locking nut with flange	M5		FRSC0112	2
42	Lens head screw	TX25 - M5 x 14 mm (8.8)	1 & 4 Nm see drawing	FRSC0065	2
43	Plastic spacer	ø 5,2 x 10 x 3 mm		SM1142	1
44	Rear fender			FER0028	1

# ÜBERSICHTSZEICHNUNG

## ASSEMBLY DRAWING

# GHOST

FACT SHEET:	
SHOCK LENGTH:	-----
SHOCK HARDWARE TOP:	-----
SHOCK HARDWARE BOTTOM:	-----
HEADSET TOP:	ZS 44
HEADSET BOTTOM:	ZS 56
SEATPOST DIAMETER:	31,6 MM
CLAMP INNER DIAMETER:	34,9 MM
BOTTOM BRACKET:	-----
KICKSTAND:	KSA18 (Adapter required)
ISCG STANDARD:	-----
CARRIER MOUNT:	YES
FENDER COMPATIBLE:	YES

DROPPER SEATPOST READY:	NO
WATTERBOTTLE MOUNT:	1x
MAXIMUM PERMISSIBLE TOTAL WEIGHT:	150 KG
MAXIMUM TIRE SIZE:	
WHEEL SIZE:	27,5"
QUICK RELEASE LENGTH:	169 MM
OVER-LOCKNUT DIMENSION (O.L.D.):	148 MM
FD CLAMP SIZE:	-----
FD TYPE:	-----
ENGINE:	YAMAHA PW-ST
BATTERY:	SIMPLO 630 WH
DISPLAY:	YAMAHA DISPLAY A